

SINGLE USE STERILE SURGICAL LENSES

Vitrectomy and surgical wide field lenses supplied with removable silicone ring.



SMT 024 PLANO LENS

This lens offers a 36° field of view of the retina at a magnification of 1.02x and a custom anti-reflection coating that minimizes unwanted reflections.



SMT 023 MAGNIFIER LENS

This lens offers a 30° field of view and a 1.2x magnified image and a custom anti-reflection coating that minimizes unwanted reflections.



SMT 022 BI-CONCAVE LENS

This lens offers a 25° field of view at 0.8x magnification and a custom anti-reflection coating that minimizes unwanted reflections.



SMT 020 20 DEGREE PRISM LENS

This lens offers a 36° field of view with a 1.02x image magnification for imaging of the peripheral fundus. It has a custom anti-reflection coating that minimizes unwanted reflections.



SMT 021 30 DEGREE PRISM LENS

This lens offers a 36° field of view with a 1.02x image magnification for imaging of the peripheral fundus. It has a custom anti-reflection coating that minimizes unwanted reflections.



SMT 026 SUTURE RING

SMT 038 SUTURE RING WITH TABS

This ring provides a stable platform to hold any of Sensor Medical's vitrectomy lenses. Available with or without tabs.



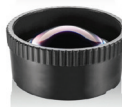
SMT 027 FORCEPS

The forceps allow placement and manipulation of any of Sensor Medical's vitrectomy lenses.



SMT 037 SURGICAL WIDE FIELD LENS

This small, wide field lens offers a 155° field of view with an image magnification of 0.42x and an anti-reflection coating. The physical size makes it ideal for surgery.



SMT 019 OSHER 78D LENS

When used with an operating microscope, this lens provides a view of the retina. The lens has an image magnification of 0.77x, a field of view of 80° static, and an anti-reflection coating.

SMT 032 SURGICAL GONIO PRISM, RH

SMT 033 SURGICAL GONIO PRISM, LH

This lens allows direct viewing (no mirror) of the angle during glaucoma surgery. Image magnification is 1.2x. Both right and left handed version available.



SMT 029 4 MIRROR LENS WITH HANDLE

This lens has four 64° mirrors for efficient visualization of the angle and a central optic for viewing the posterior pole. It is mounted on a handle for easy manipulation.



SMT 035 SINGLE MIRROR WITH HANDLE

This lens allows indirect viewing (via a mirror) of the angle during glaucoma surgery. Image magnification is 1.0x. It has a custom anti-reflection coating that minimizes unwanted reflections.

