

STERILE SINGLE USE BI-ASPHERIC LENSES

Exceptional optics with anti-reflection coating for use in the operating room or NICU.



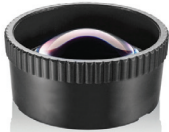
SMT 009 90D LENS

Sensor Medical's single use 90D Lens provides a clear 0.64x magnified image of the patient's fundus and a 75° field of view. Unlike any lens on the market, it has an anti-reflection coating and is provided sterile in an individual pouch for use in sterile environments. Exceptional optics with no scratches or water marks; ideal for surgery or the NICU.



SMT 019 OSHER 78D LENS

Sensor Medical's single use 78D Lens provides a clear 0.77x magnified image of the patient's fundus and a 80° field of view. Unlike any lens on the market, it has an anti-reflection coating and is provided sterile in an individual pouch for use in sterile environments. Exceptional optics with no scratches or water marks; ideal for surgery or the NICU.



SMT 010 60D LENS

Sensor Medical's single use 60D Lens provides a clear 0.96x magnified image of the patient's fundus and a 68° field of view. Unlike any lens on the market, it has an anti-reflection coating and is provided sterile in an individual pouch for use in sterile environments. Exceptional optics with no scratches or water marks; ideal for surgery or the NICU.



SMT 011 28D LENS

Sensor Medical's single use 28D Lens provides a clear 2.1x magnified image of the patient's fundus and a 53° field of view. The laser spot magnification is 0.47x. Unlike any lens on the market, it has an anti-reflection coating and is provided sterile in an individual pouch for use in sterile environments. Exceptional optics with no scratches or water marks; ideal for surgery or the NICU.



SMT 012 20D LENS

Sensor Medical's single use 20D Lens provides a clear 3.0x magnified image of the patient's fundus and a 53° field of view. The laser spot magnification is 0.33x. Unlike any lens on the market, it has an anti-reflection coating and is provided sterile in an individual pouch for use during surgery. Exceptional optics with no scratches or water marks; ideal for surgery or the NICU.